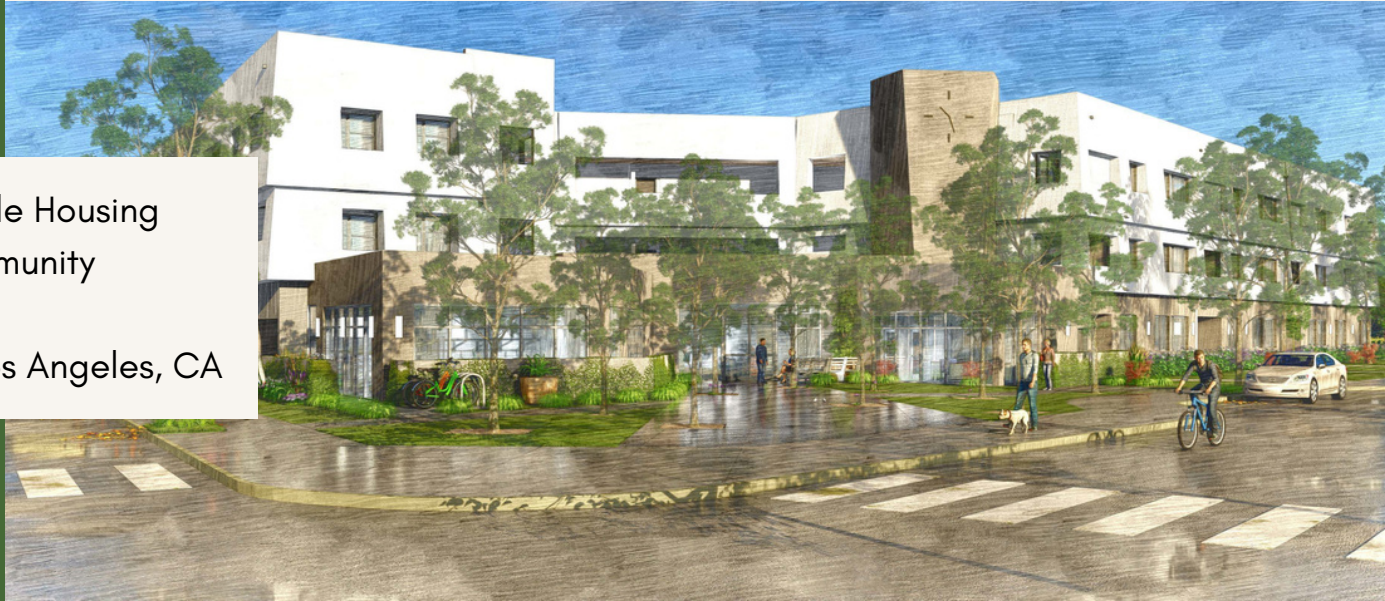


ACCEPTING LOTTERY APPLICATIONS

November 1, 2023 - November 30, 2023

Affordable Housing
Community

Located in Los Angeles, CA



www.tsahousing.com



parkviewplace@tsaproperties.com



Hotline: (888) 373-6111

TTY: (800) 855-7100

HOW TO APPLY

Applications Available: November 1, 2023

Application Deadline: November 30, 2023

Complete **ONLINE** at:
<https://www.parkviewplacehousing.com/>

Download and **print** at:
<https://www.parkviewplacehousing.com/>

Pick up **ON-SITE** at:
1351 E 41st Ave., Los Angeles, CA 90011

Mail Completed Applications To:
Parkview Place, c/o Thomas Safran & Associates
PO Box 49898, Los Angeles, CA 90049

Mailed applications must be postmarked by November 30, 2023, to be included in the lottery.



Parkview Place

1351 E 41st Ave., Los Angeles, CA 90011



ABOUT THE **PROPERTY**

Parkview Place is a 127-unit, affordable housing community located in Los Angeles, CA.

The community features on-site management, on-site case managers, and maintenance staff. The property features one-, two-, and three-bedroom apartments. Of the 127 units, thirty-one (31) units will be filled through the Coordinated Entry System (CES), Service Provider Area (SPA) 6.

PROPERTY AMENITIES

- Community Room
- Case Managers On-Site
- Fitness Room
- On-Site Laundry Facilities
- Courtyard
- BBQ Area
- Pet-Friendly Community
- On-Site Management

RENT/ INCOME RESTRICTION

Parkview Place is a 127-unit, affordable housing community located in Los Angeles, CA. Thirty-one (31) units will be filled through the Coordinated Entry System. To qualify, applicants must have a gross monthly income that is at least twice the monthly rent. Voucher holders do not need to meet the minimum gross monthly income requirement.

Subject to change.

Unit Size	Occupancy	Rent/Month	Min. Gross Monthly Income
1 BD	Min. 1 / Max. 3	up to \$1,419	\$2,680
2 BD	Min. 2 / Max. 5	up to \$1,792	\$3,216
3 BD	Min. 3 / Max. 7	up to \$1,967	\$3,716

INCOME LIMITS

Applicants must have incomes below the 60% AMI for Los Angeles County for their household size. See the chart below. **Subject to change.**

1 Person	2 People	3 People	4 People	5 People	6 People	7 People
\$52,980	\$60,540	\$68,100	\$75,660	\$81,720	\$87,780	\$93,840

PARKING

Parking is limited and not guaranteed.

This housing is offered without regard to race, color, religion, sex, gender, gender identity and expression, familial status, national origin, citizenship status, immigrant status, primary language, marital status, ancestry, age, sexual orientation, disability, source of income (including receipt of Section 8 and other similar vouchers), genetic information, military or veteran status, arbitrary characteristics, or any other basis currently or subsequently prohibited by law.

This property has accessible and adaptable units for people with disabilities. People with disabilities may ask for, and receive reasonable accommodations, modifications, and auxiliary aids, including in the application process. Please contact parkviewplace@tsaproperties.com to make this request.

This property is a 100% non-smoking community

