

Affordable Housing for Seniors for Ages 62+

**NOW ACCEPTING
APPLICATIONS ONE BEDROOM
APARTMENTS \$1,302.00^^**

Call for information & appointment!

^^subject to change without notice



Individuals with a disability have the right to ask for and receive reasonable accommodations to request auxiliary aids.

APPLICANTS ARE REQUIRED TO MEET INCOME RESTRICTIONS AS FOLLOWS

LIMITS	2022 LIHTC MAXIMUM ALLOWABLE ANNUAL INCOME	MINIMUM ** HOUSEHOLD INCOME
Household Size	60%	
1 Person	\$50,040	
2 Persons	\$57,180	\$3,255/month
3 Persons	\$64,320	\$39,060/year

****MINIMUM MONTHLY INCOME REQUIREMENTS DO NOT APPLY TO HOUSING VOUCHER HOLDERS.** We gladly accept Housing Choice Vouchers, VASH Vouchers and other housing vouchers. **Voucher 1 Bdrm Fair Market Rent = \$1,765**

This housing is offered without regard to race, color, national origin, sex, religion, ancestry, genetic information, source of income, age, marital status, familial status, sexual orientation or preference, gender identity, or disability, or any other basis prohibited by law.

**CALL TODAY!
323.723.4044**

METRO @ BUCKINGHAM
SENIOR APARTMENTS
4018 BUCKINGHAM ROAD
LOS ANGELES, CA 90008
METROBUCKINGHAM@WSHMGMT.COM
WWW.METROBUCKINGHAM.COM

INCOME & ASSET VERIFICATION REQUIRED
Low Income Housing Tax Credit Program

APARTMENT AMENITIES

- Mobility & Communication Accessible Apts Available
- Energy Efficient Kitchens with Stove, Oven & Refrigerator
- Central Heat & Air
- Cable & High-Speed Internet Ready

COMMUNITY AMENITIES

- Secured Access Entries
- Fitness Center
- Game Room
- Library
- Scheduled Social Activities
- Large Central Garden Courtyard
- 2 Elevators
- Community & Media Room
- Laundry Center on Each Floor
- Bicycle Storage Room
- Designated Exterior Smoking Area
- Professionally Managed
- Pet Friendly – Pet Policy
- Near Crenshaw/LAX light rail at Martin Luther King Jr. Station

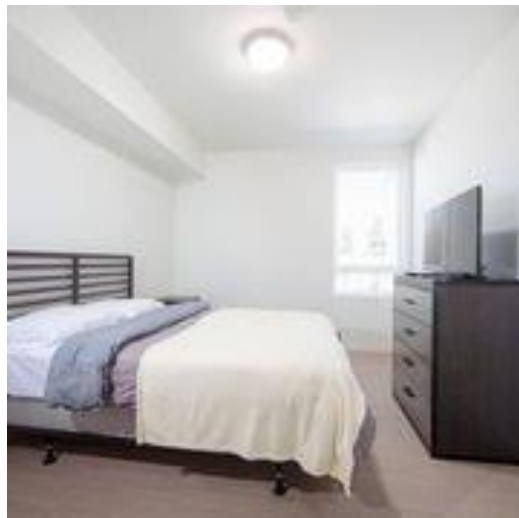
FEES

- Application Fee: \$25^
- Security Deposit: \$500*

^Cost per household applicant.

**The security deposit varies based on credit report and apartment type. Additional deposit may be required. Please ask your Leasing Agent for more information.*





 **METRO**
@ BUCKINGHAM

*** Furnishings shown are for display purposes only. Appliances are included.*